



WE HOPE TO DO BUSINESS TOGETHER

Our Previous Work

Abu Dhabi, Albania, Algeria, Azerbaijan,
Croatia, Dubai, England, France, Georgia, Germany, Israel,
Kosovo, Macedonia, Mexico, Morocco, Poland, Romania,
Russia, KSA, Serbia, Slovenia, Syria, Ukrain, Jordan, Tunusia,
South Korea, Zambia, Iraq, Cyprus, Italia



Phone:

+90 536 561 48 53

Mail:

info@rollinemuhendislik.com
export@rollinemuhendislik.com
rollineengineering@gmail.com

Address:

Saray Mah. 676. Cad. No: 20-22
Aksan Yapı Kooperatifi
Kahramankazan/ANKARA

Web:

www.rollinemuhendislik.com





**Effective
Production
Solutions**



ROLLINE
mühendislik

About Us

With our experience of more than 10 years and our sectoral know-how, Rolline is with you when it comes to production.

HISTORY

We are the team as ROLLINE have Engineering, Automation, Technical Services and International Sales experiences about special products production lines. ROLLINE produces hydraulic press brakes, hydraulic presses, corner bead production lines, production lines for gypsumboard profile, customized machinery and production lines and machinery-equipment for special products. Our products are CE certified and exported to 27 countries mainly Europe, Middle East, Russia and South America

VISION

We consider high ethics of business, professionalism and long-term cooperation. We show utmost effort in order to sustain reliability gained from our labors and customers.

MISSION

Our mission is to produce machinery with update technology and reliability in order to enable our customers being competitive

TARGET

Our target is to be a leading firm for Machinery in Building Metallic Materials and Metal Processing Machinery in Turkey and in the world.

INNOVATIONS

We provide the opportunity to work in industry 4.0 standards with automation new generation Siemens brand integration. We offer our online technical support to your service with our 24/7 energy efficiency and soft work by using our ability to intervene instantly wherever in the world with remote connection.

The Content

About Us	01
The Content	02
Corner Bead Production Line	03-04
Dimesions And Technical Specifications	05
Product Samples	06
Rollforming Machinery&Production Lines	07-08
Dimesions And Drawings	09
Product Samples Gypsumboard Profiles	10
Cable Production Line	11-12
Cnc Hydraulic Press	13-14

CORNER BEAD PRODUCTION LINE

STANDARD FEATURES

- Coil width: 30mm-75mm
- Material: Galvanized steel
- Material Thickness: 0.30mm-0.50mm
- Production speed: 24 meter/min
(angle bead with 5-windows)
50 meter/min
(drywall perforated angle bead)

ECCENTRIC PRESS

- Capacity: 35t
- Construction: Steel welded structure
- Type: H frame straight sided
Pneumatic Engage
- Coil feed: Servomotor-MITSUBISHI
- Speed: 300 stroke/min.
- Stroke: 24mm
- Table size: 700mm x 400mm
- Power: 5.5 kW

OPTIONAL FEATURES

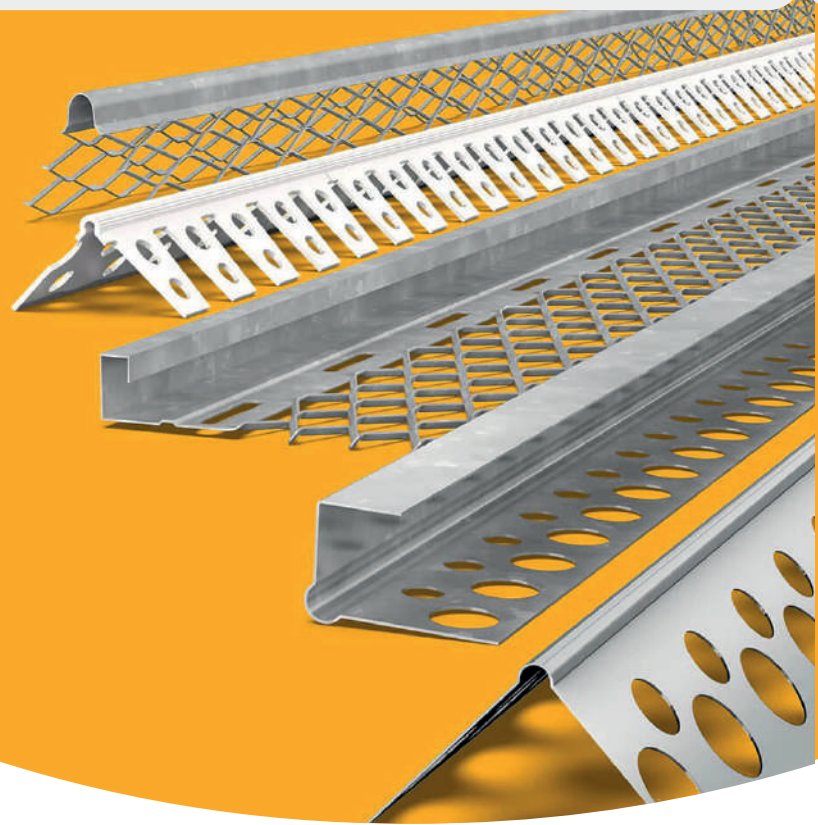
- Coil material from Stainless Steel, Aluminum
- No. of Stations: 8-10-12
- Production speed: 100 meter/min. (drywall perforated angle bead)
- Rotary punching unit
- Cassette/combi (Quick-change) rollforming mills to minimize setup time
- Automatic-adjustable stands to setup different profile dimensions

DECOILER

- Coil width: 100mm
- Outside Dia.: 1.200mm
- Capacity: 1.000 kg
- Power: 0,55 kW



ANGLE BEADS
ARCHITRAVE BEADS
PLASTER STOP BEADS
DEPTH GAUGE
DRYWALL ANGLE BEADS



ROLLFORMING MACHINE

- Construction: Standard (conventional) mill
- Adjustable upper shafts for different material thickness
- Shafts supported by two ends
- No. of Station: 6
- Bearing: SKF/FAG/TIMKEN
- Shafts: Steel 4140, precisely machined and grinded, hardened to 56-58HRC
- Power transmission: Direct gear driven

LENGTH CUTTING UNIT

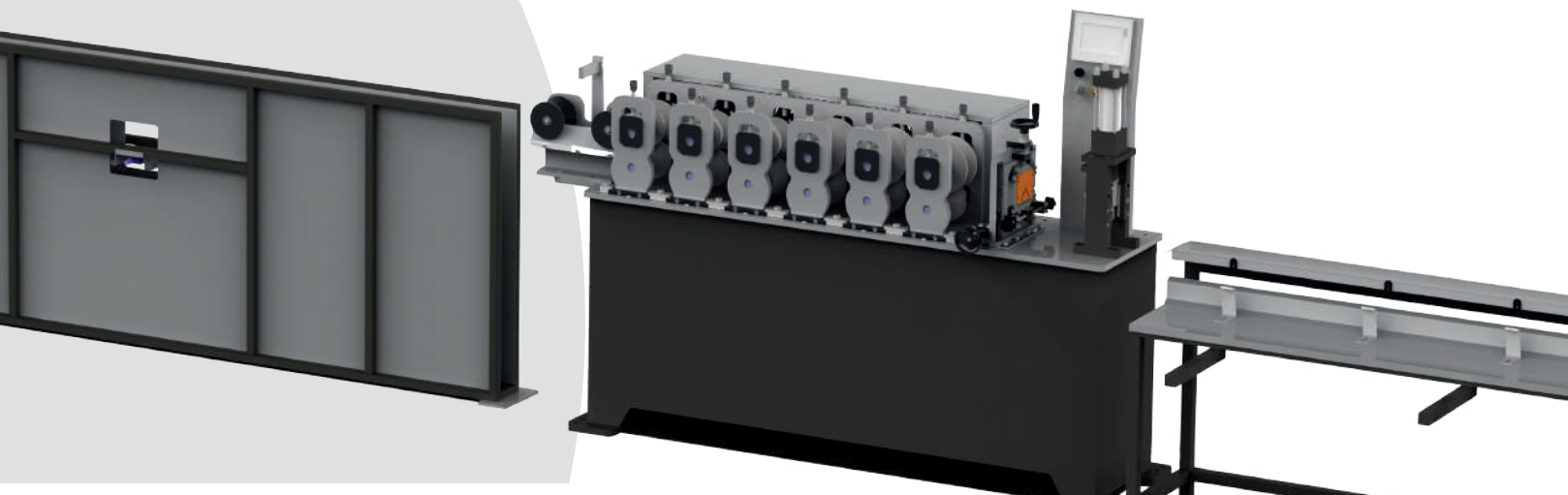
- Hydraulic cutting unit
- Cutting die from Cold work alloyed tool steel 1.2379
- Stop type cutting

AUTOMATION

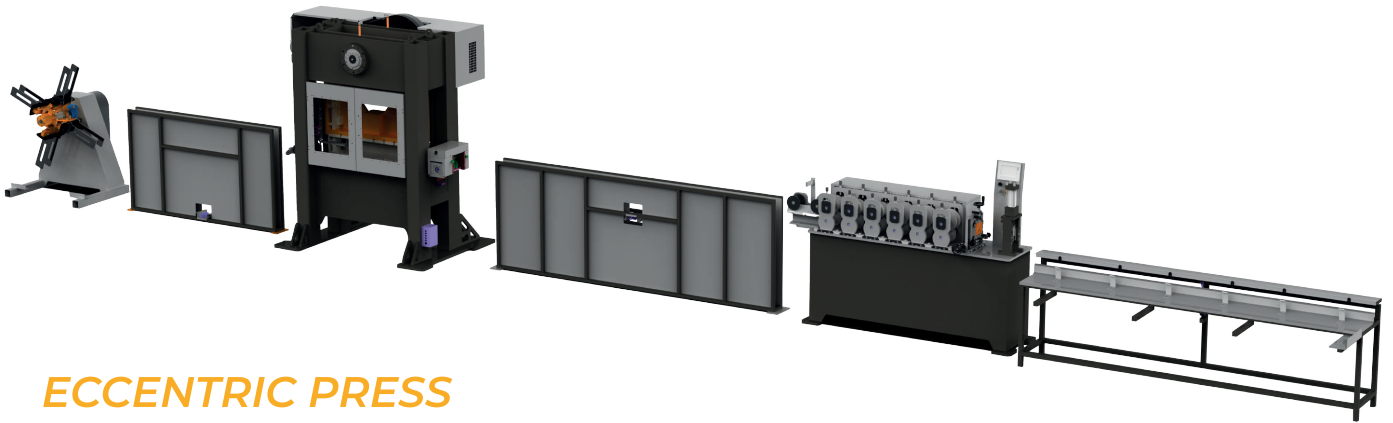
- Mitsubishi touchscreen PLC, servofeeder
- Electricals: SIEMENS, MOELLER, TELEMECANIQUE
- Electric power supply: 10 kW

WORK-OUT TABLE

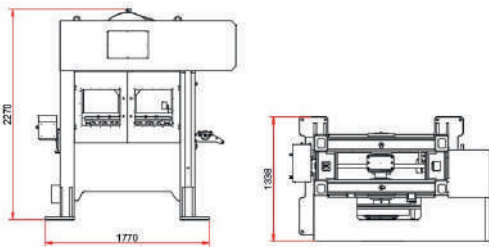
- Steel welded-painted construction
- Pneumatic drive mechanism
- Length: 3.3 meter



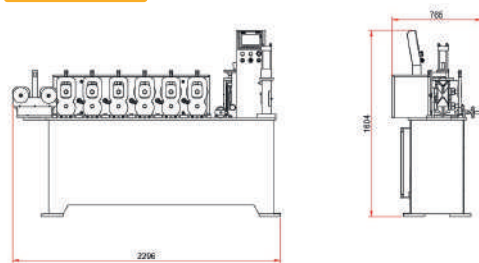
DIMENSIONS AND TECHNICAL SPECIFICATIONS



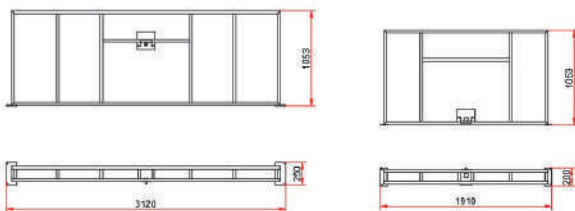
ECCENTRIC PRESS WITH SERVOFEDER



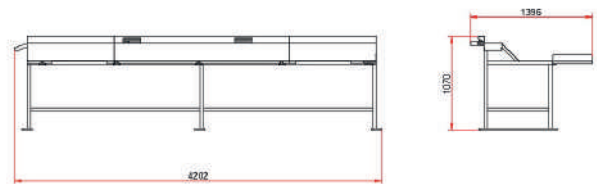
ROLLFORMING UNIT



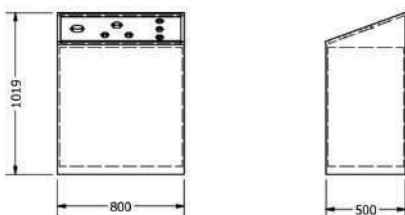
STRIP CHANNEL



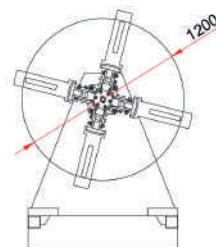
WORK-OUT



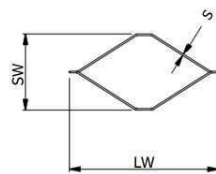
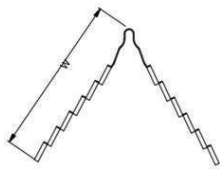
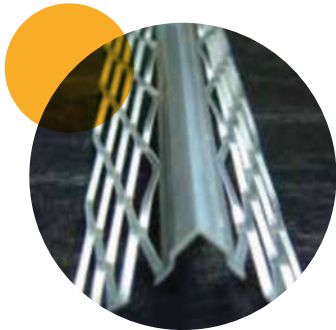
CONTROL UNIT



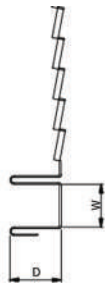
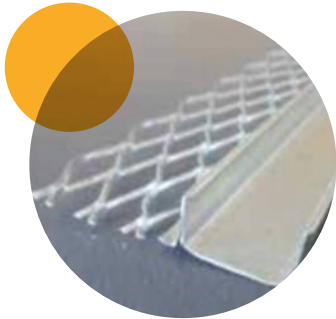
DE-COILER



PRODUCT SAMPLES

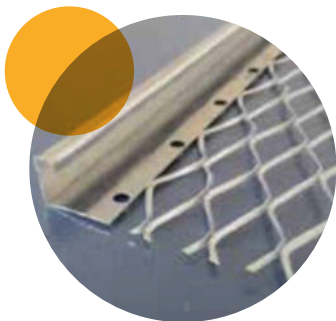


Wing Length (W):
35mm - 100mm
Window Size as per
customer request:
LW x SW x S
Galvanized steel,
Stainless steel 304 L



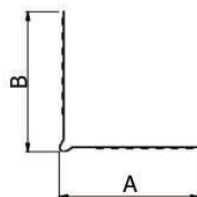
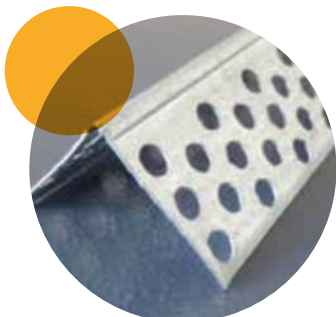
W: 10mm - 13mm
16mm - 19mm
D: 12

Galvanized steel,
Stainless steel 304 L



D: 10mm - 13mm
16mm - 19mm

Galvanized steel,
Stainless steel 304 L



Wing Length:
20 mm - 30 mm
Hole Diameters:
4mm - 5mm - 6mm - 8mm

Galvanized steel,
Aluminium

ROLLFORMING MACHINERY & PRODUCTION LINES

STANDART FEATURES

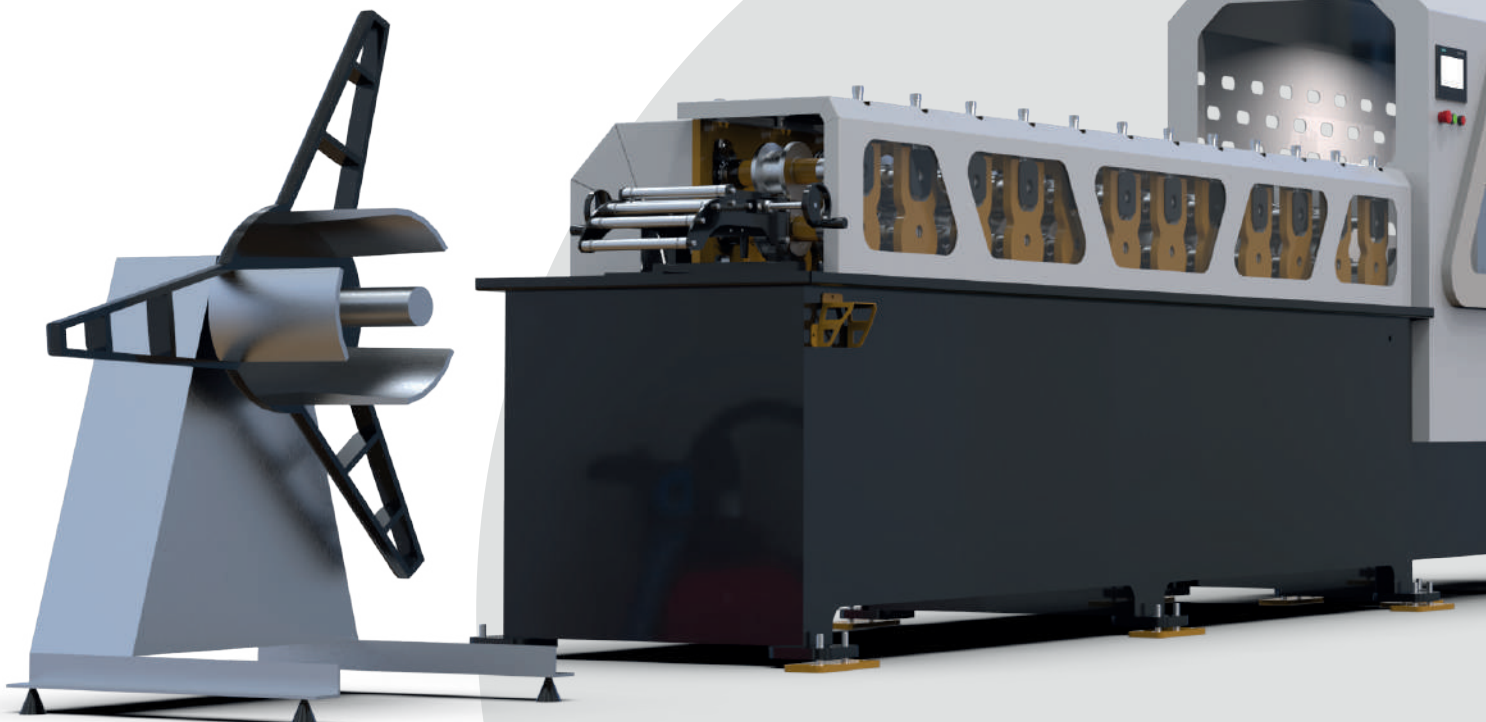
- Coil width: 200mm
- Material: Galvanized steel
- Material Thickness: 0.40mm - 0.60mm
- Production speed: 60 meter/min.

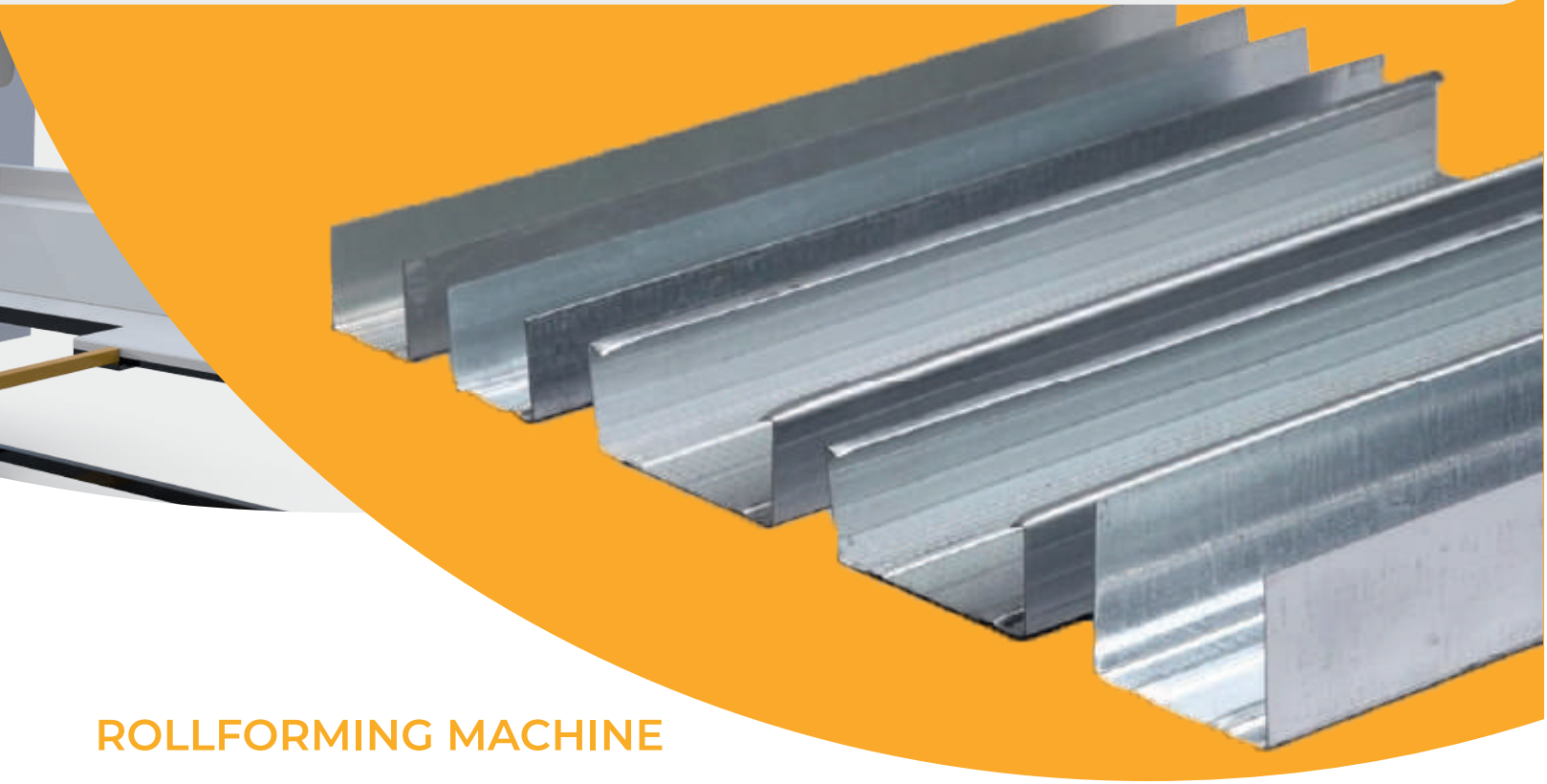
DECOILER

- Coil width: 300mm
- Outside Dia.: 1.200mm
- Capacity: 2.000 kg
- Power: non-motorized brake type

OPTIONAL FEATURES

- Profile thickness up to 1.5mm 14 stations
- Production speed: 100 meter/min
- Motorized marking unit for profile pattern
- Rotary punching unit
- Cassette/combi (Quick-change) rollforming mills to minimize setup time
- Automatic-adjustable stands to setup different profile dimensions

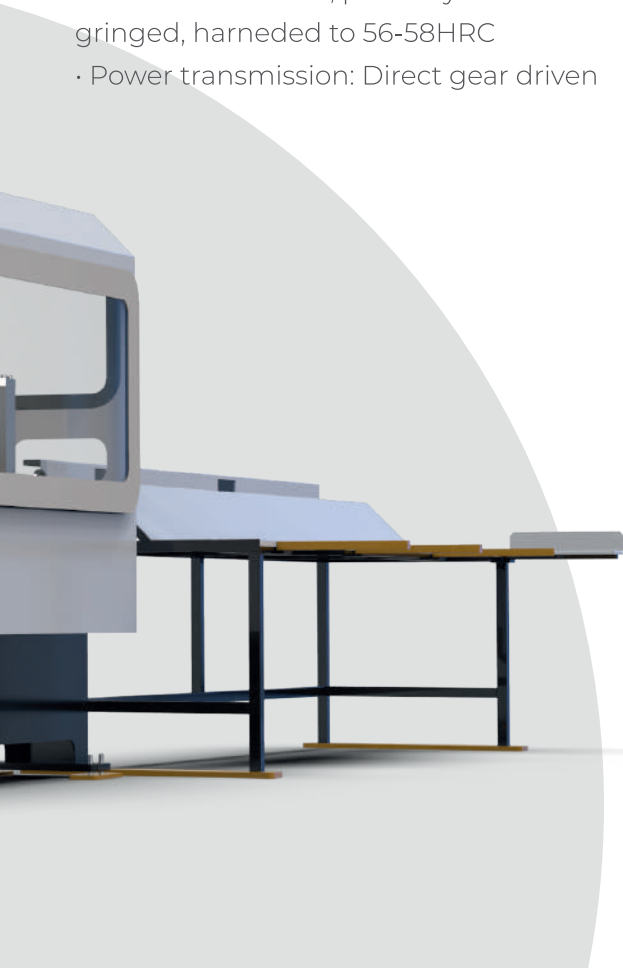




ROLLFORMING MACHINE

- Type: Standard (conventional) mill
- Steel welded and precisely machined mill base
- Shafts supported by two ends
- No. of Station: 12
- Non-motorized marking unit at 1st station
- Bearing: SKF/FAG/TIMKEN
- Shafts: Steel 4140
- Rollers: Steel 4140, precisely machined and grinded, hardened to 56-58HRC
- Power transmission: Direct gear driven

FURRING CHANNEL
MAIN CHANNEL
STUD CHANNEL
WALL ANGLE
STUD
TRUCK
UD, CD, UW, CW PROFILES
OMEGA PROFILE



FLYING SHEAR WITH SERVOMOTOR

- Hydraulic cutting unit
- Cutting die from Cold work alloyed tool steel 1.2379
- Servomotor drive for translation of punching & cutting unit on linear rails-guideway

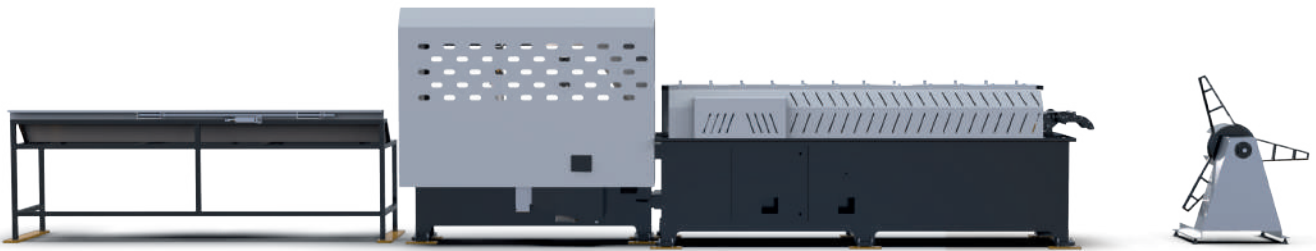
AUTOMATION

- Mitsubishi touchscreen PLC, servofeeder
- Electricals: SIEMENS, MOELLER, TELEMCHANIQUE
- Electric power supply: 10 kW

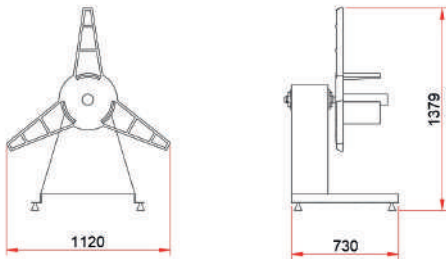
WORK-OUT TABLE

- Steel welded-painted construction
- Pneumatic drive mechanism
- Length: 3.3 meter

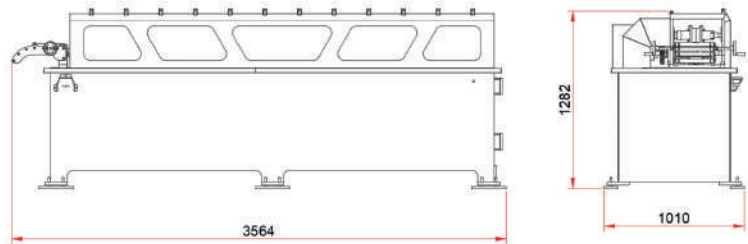
DIMESIONS AND DRAWINGS



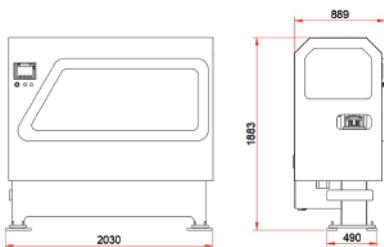
DECOILER



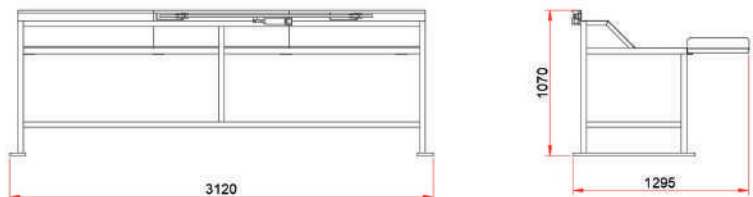
ROLLFORMING UNIT



WORK-OUT TABLE



SERVO FLYING SHEAR

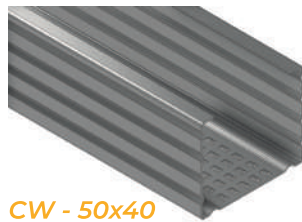


PRODUCT SAMPLES

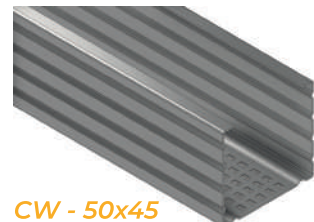
GYPSUMBOARD PROFILES



CW - 50x35



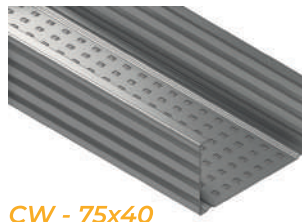
CW - 50x40



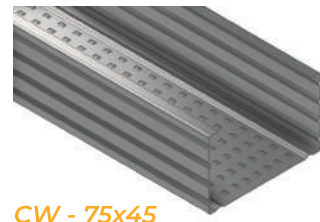
CW - 50x45



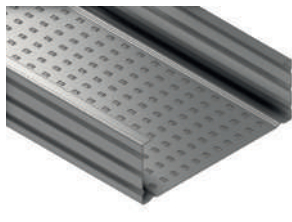
CW - 75x35



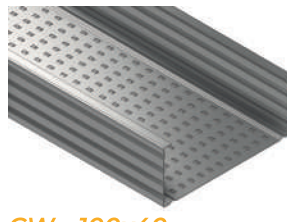
CW - 75x40



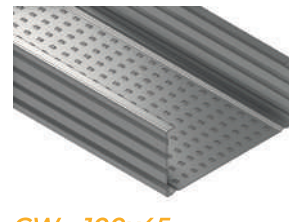
CW - 75x45



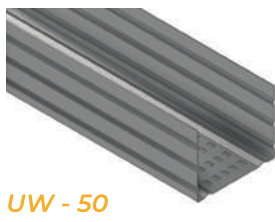
CW - 100x35



CW - 100x40



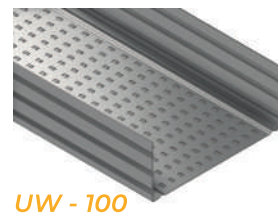
CW - 100x45



UW - 50



UW - 75



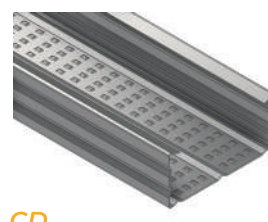
UW - 100



OMEGA V



OMEGA U



CD



UD

CABLE PRODUCTION LINE

DECOILER

- Hydraulic or pneumatic
- Capacity: 2.500 kg - 5000 kg
- Power: 1.5 kW - 3 kW

ECCENTRIC OR HYDRAULIC PRESS

- Capacity: 35 - 60 - 100 - 150 ton
- Construction: Steel welded structure
- Type: H - D - C
- Coil feed: Servomotor-MITSUBISHI-SIEMENS
- Speed: 150 - 300/min
- Stroke: 24mm - 50mm
- Table size: 700 x 400mm - 1200 x 800mm
- Power: 5.5 kW - 9 kW

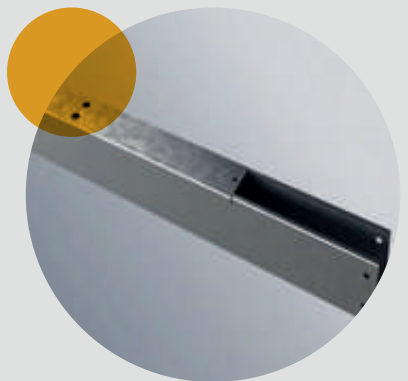
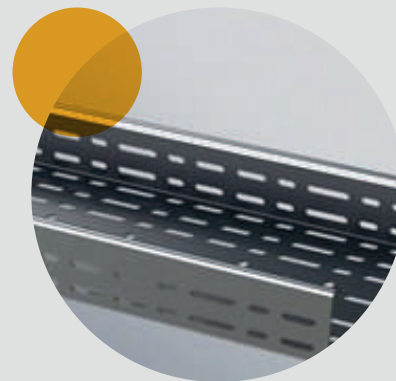
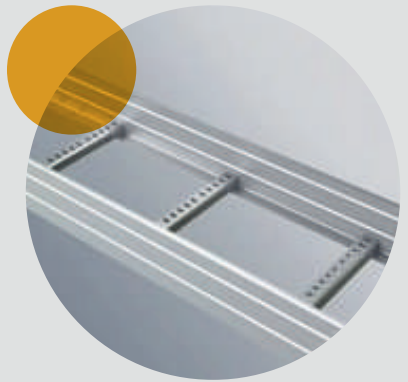
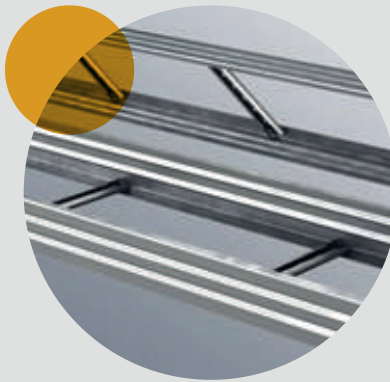
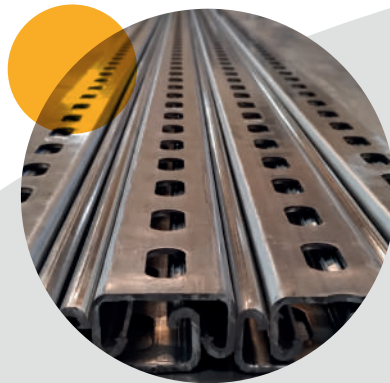


ROLLFORMING MACHINE

- Type: Standard (conventional) mill
- Steel welded and precisely machined mill base
- Shafts supported by two ends
- Station: 10 - 12 - 14 - 18
- Non-motorized marking unit at station
- Bearing: fag - timken - skf - ors
- Shafts: Steel 4140
- Rollers: Steel 4140, precisely machined and grinded, hardened to 56-58 HRC
- Power transmission: Direct gear driver
- Water cooling system

STRAIGHTENER&FEEDER

- 200mm - 700 mm coil width
- MITSUBISHI - SIEMENS Servomotor



CNC HYDRAULIC PRESS

STANDARD EQUIPMENT

- High stroke hydraulic cylinders
- Precision back gauge system
- Accordance with CE HORBIGER hydraulic system
- Operating speeds can be adjusted with proportional valve system
- Foot pedal with emergency stop and up button for remote control
- Hardened and grinded the upper die part and V-channel lower dies
- Graphic LCD display
- Different language options
- Up to 200 programs/400 steps
- Setpoint bending angle input data
- Colour RAL 7015-RAL 5023

OPTIONAL FEATURES

- Optical barrier system operator safety SICK
- R-axis for back gauge
- Tailor-made throat depth





CONTROL UNITS



ESA S630



DELEM DA52



CYBELEC DNC600

DIMENSIONS AND SPECIFICATIONS

CNC MODELS			PB-30	PB-40	PB-50	PB-50	PB-60	PB-60	PB-80	PB-80	PB-100	PB-100	PB-135	PB-135	PB-175	PB-175
Bending Capacity	Ton		30	40	50	50	60	60	80	80	100	100	135	135	175	175
Bending Length	mm	A	1250	1250	1250	2100	2100	2600	2100	2600	2600	3100	3100	4100	3100	4100
Axis control			Y-X	Y1-Y2-X	Y1-Y2-X	Y1-Y2-X	Y1-Y2-X	Y1-Y2-X	Y1-Y2-X	Y1-Y2-X	Y1-Y2-X	Y1-Y2-X	Y1-Y2-X	Y1-Y2-X	Y1-Y2-X	Y1-Y2-X
Distance Between Feet	mm	B	1010	1010	1050	1600	1600	2150	1600	2150	2150	2150	2600	2600	3200	3200
Strok	mm	C	200	210	210	210	210	210	210	210	210	210	210	210	210	210
Spacing Between Jaws	mm	j	320	320	420	420	420	420	420	420	420	420	420	420	420	420
Throat Depth	mm	D	250	300	350	350	350	350	350	350	350	350	350	350	350	350
Free Fall Speed	mm / s		100	120	150	150	150	150	150	150	150	150	150	150	120	120
Bending Speed	mm / s		10	10	10	10	10	10	10	10	10	10	10	10	10	10
Re-turning Speed	mm / s		100	100	120	120	120	120	120	120	120	120	120	120	100	100
Bottom Plate Height	mm	E	800	820	820	820	830	830	830	830	840	840	850	850	850	850
Bottom Plate Width	mm		120	120	120	120	120	120	120	120	120	120	120	120	120	120
Back Gauge Distance	mm		500	500	500	500	500	500	500	500	500	500	500	500	500	500
Backgauge Speed	mm / s		125	125	125	250	250	250	250	250	250	250	250	250	250	250
Length	mm	G	1700	1700	1750	2550	2550	3100	2250	3100	3100	3700	3700	4650	3700	4650
Depth	mm	L	1100	1200	1450	1450	1550	1550	1550	1550	1600	1600	1600	1600	1600	1600
Height	mm	H	2100	2150	2200	2200	2200	2200	2250	2250	2250	2250	2300	2300	2300	2300
Motor power	kW		3	3	4	4	5,5	5,5	7,5	7,5	7,5	7,5	11	11	11	11
Hydraulic Tank	Lt		80	80	120	120	140	140	140	140	180	180	180	210	180	210
Approximate Weight	Kg		2000	2250	2900	3600	4300	4800	4500	500	6000	6700	7500	8800	8200	9700